



GMT MONTHLY MEMBERSHIP PROGRESS REPORT

Results as of: 12/31/2023

Multiple District 318

LOCATION: INDIA

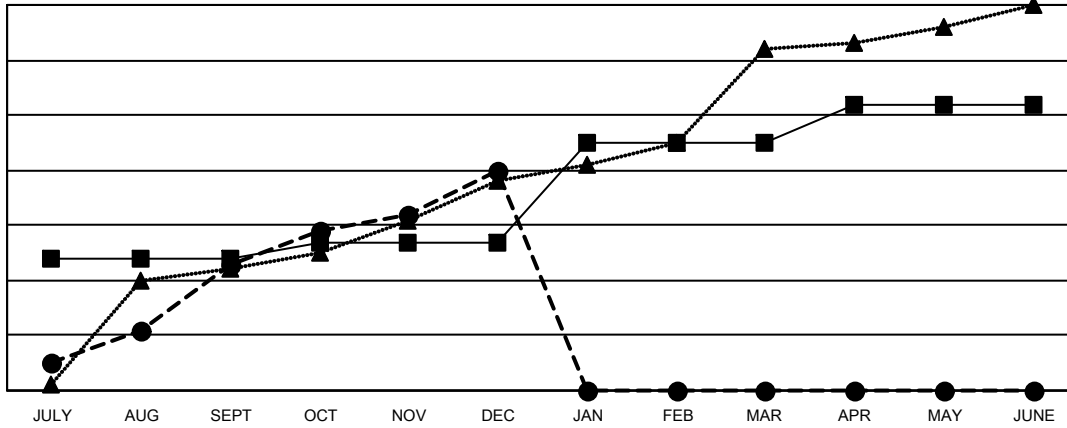
GMT: OPEN

GMT CA 6 - I

Clubs			
RESULTS FOR 2023-2024			
QUARTER	NEW CLUB GOAL	NEW CLUBS	DROPPED CLUBS
JULY/AUG/SEPT	24	23	3
OCT/NOV/DEC	3	17	19
JAN/FEB/MAR	18	0	0
APR/MAY/JUNE	7	0	0

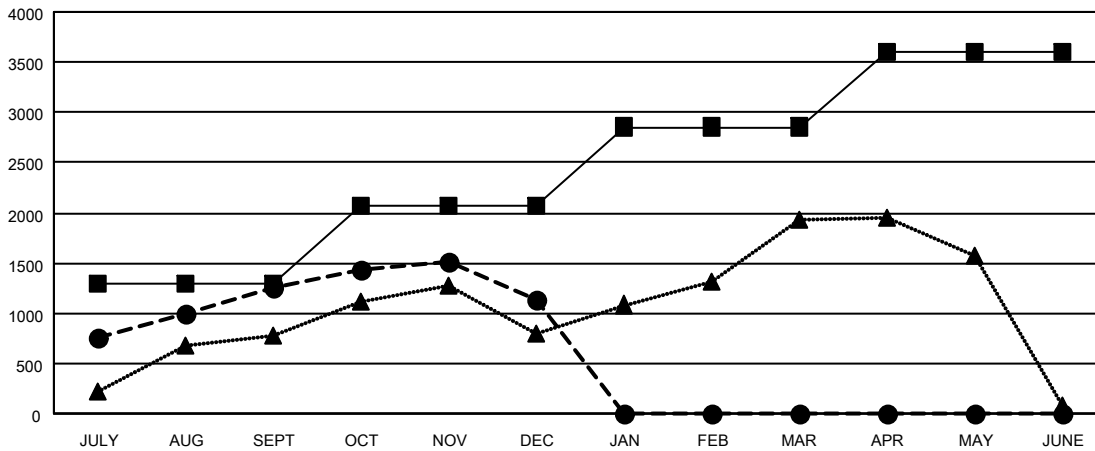
Members			
RESULTS FOR 2023-2024			
QUARTER	MEMBER GROWTH NET GOAL	MEMBER GROWTH ACTUAL	DROPPED MEMBERS ACTUAL (including transfers)
JULY/AUG/SEPT	1,295	2,007	635
OCT/NOV/DEC	770	1,099	1,193
JAN/FEB/MAR	790	0	0
APR/MAY/JUNE	745	0	0

GOALS AND ACTUAL NEW CLUBS CUMULATIVE



- - CURRENT YEAR GOALS FOR NEW CLUBS
- - CURRENT YEAR ACTUAL NEW CLUBS
- ▲ - LAST YEAR ACTUAL NEW CLUBS

GOALS AND ACTUAL MEMBERS CUMULATIVE



- - MEMBER GROWTH NET GOAL
- - MEMBER GROWTH ACTUAL
- ▲ - LAST YEAR MEMBERSHIP ACTUAL

DROPPED CLUBS: 22	
DROPPED MEMBERS	
DECEASED	56
CLUB CANCELLED	364
OTHER	1,408
TOTAL	1,828

482 CLUBS OF 832 ADDED 1 OR MORE NEW MEMBERS

GENDER DISTRIBUTION	
MALE	21,772 (82.06%)
FEMALE	4,760 (17.94%)

[CLICK HERE FOR CUMULATIVE MEMBERSHIP DATA](#)

TOTAL FAMILY UNIT MEMBERS	8,089
FAMILY MEMBERS PAYING HALF DUES	4,259